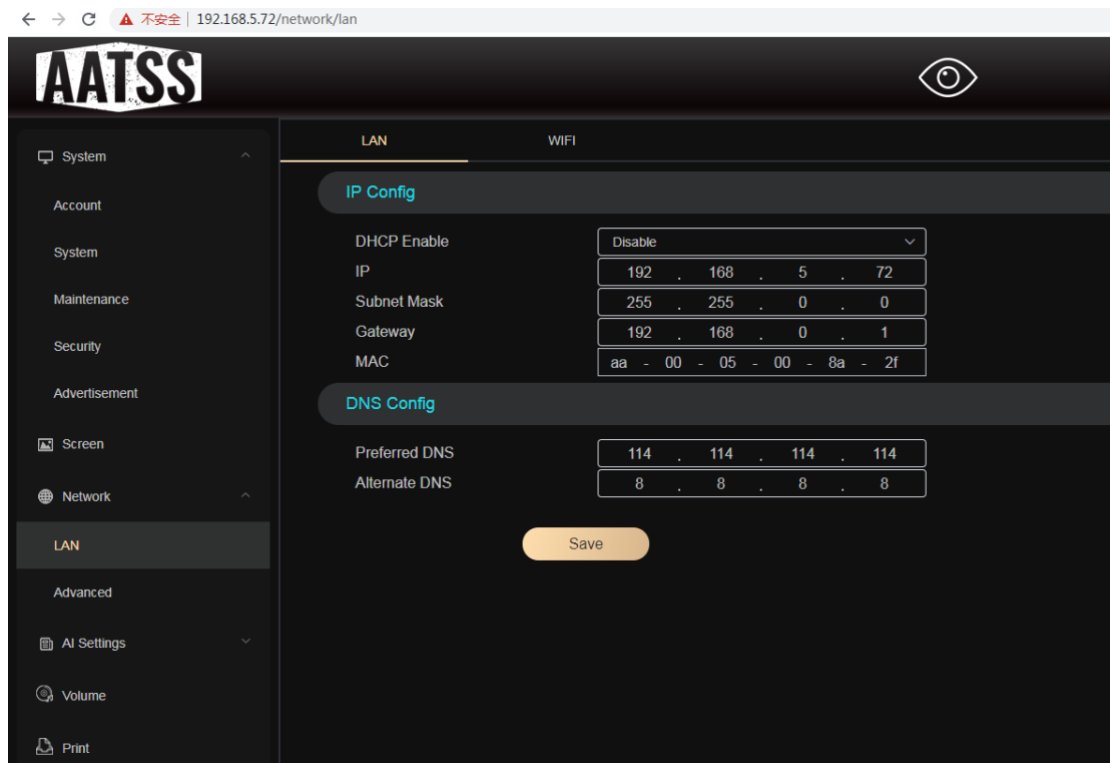
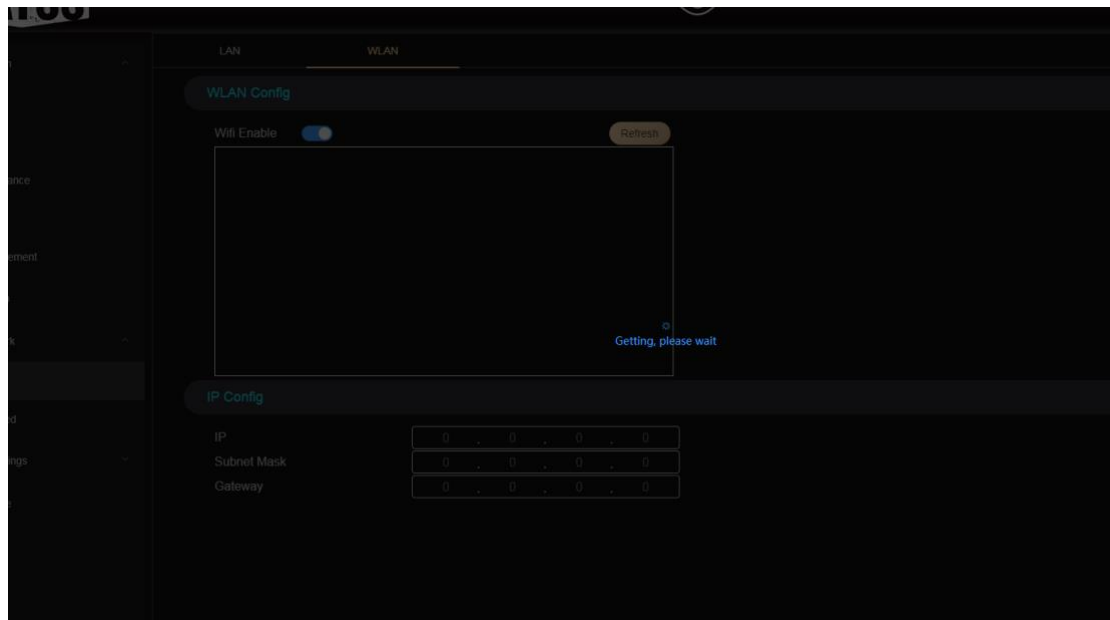


## V3 Wifi Connection Instruction

When connected to ethernet cable, go here:

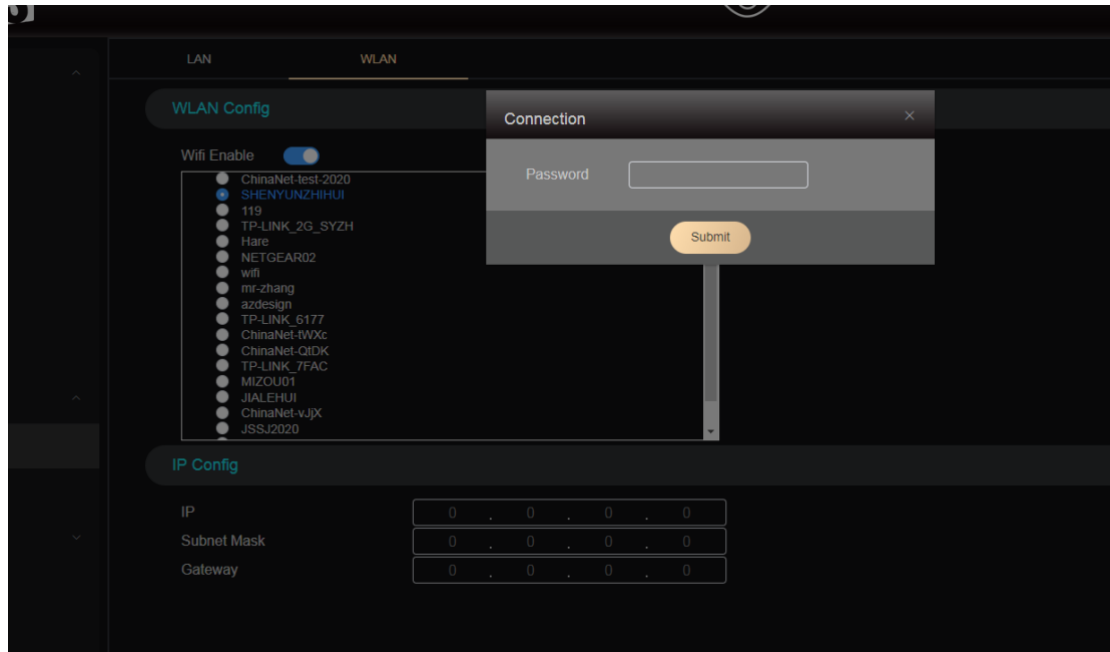


Click on WLAN and enable WIFI, the device will search for WIFI automatically. If no WIFI is detected, hit refresh



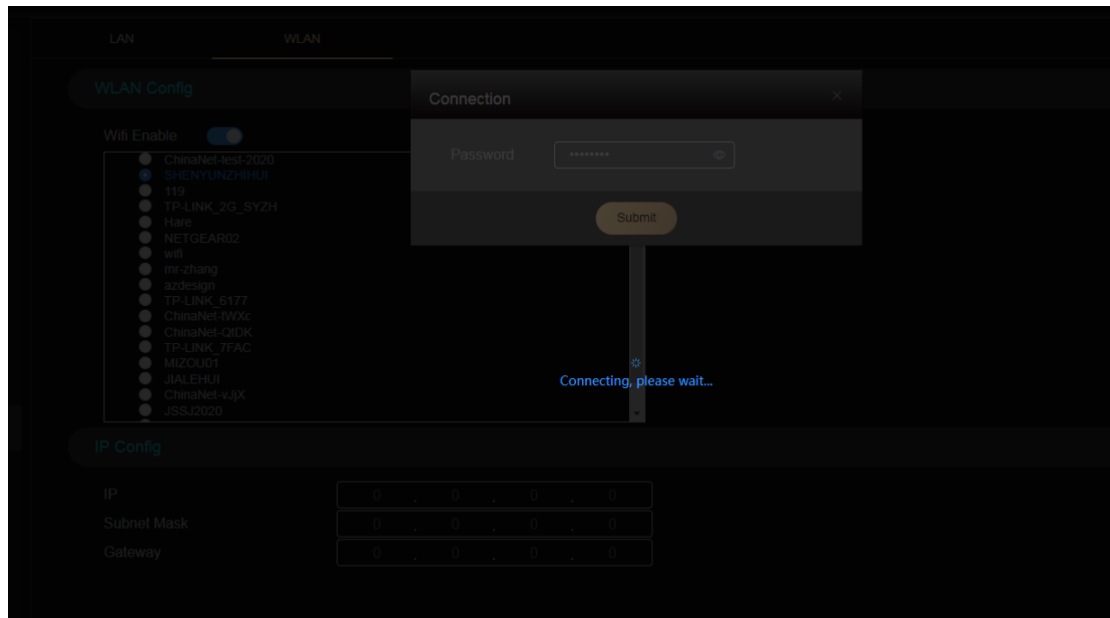
How to connect to regular WiFi:

Click on one of the WiFi and enter the password (8-16 characters). Hit submit



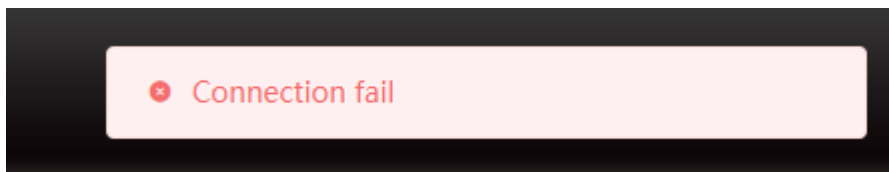
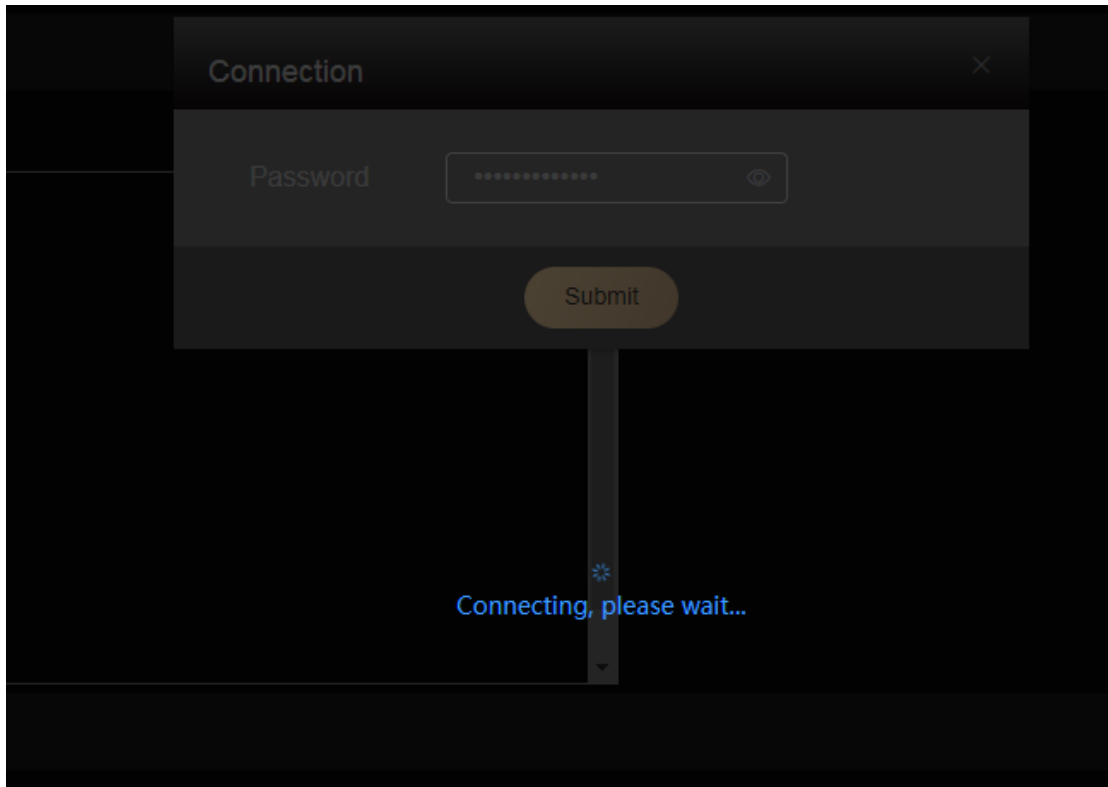
❗ Password cannot be less than 8 characters or more than 16 characters

If connection is successful, you will see this:



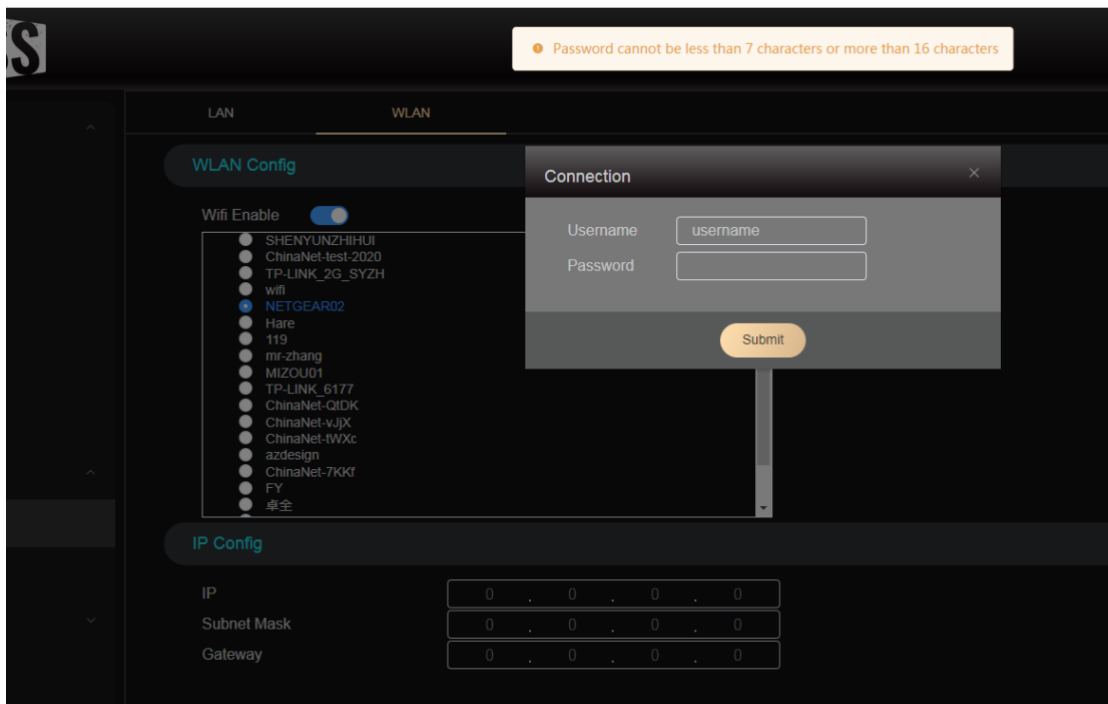
✅ Connected successfully

If the password is incorrect, you will see this:



How to connect to WPA2 Enterprise WIFIs:

Same as connecting to regular WIFIs, but the password should be 7 to 16 characters.



After successful connection, you can connect to the same WIFI using your laptop or desktop. You can access the web portal using the WIFI's IP address.

**Note:**

1. The device connected to WIFI supports an AP frequency band of 2.4GHz. It does not support an AP frequency band of 5.0 GHz.
2. The device connected to WIFI does not support WIFI with no security, that is, WIFI with an empty password.
3. Supports WPA1 & 2